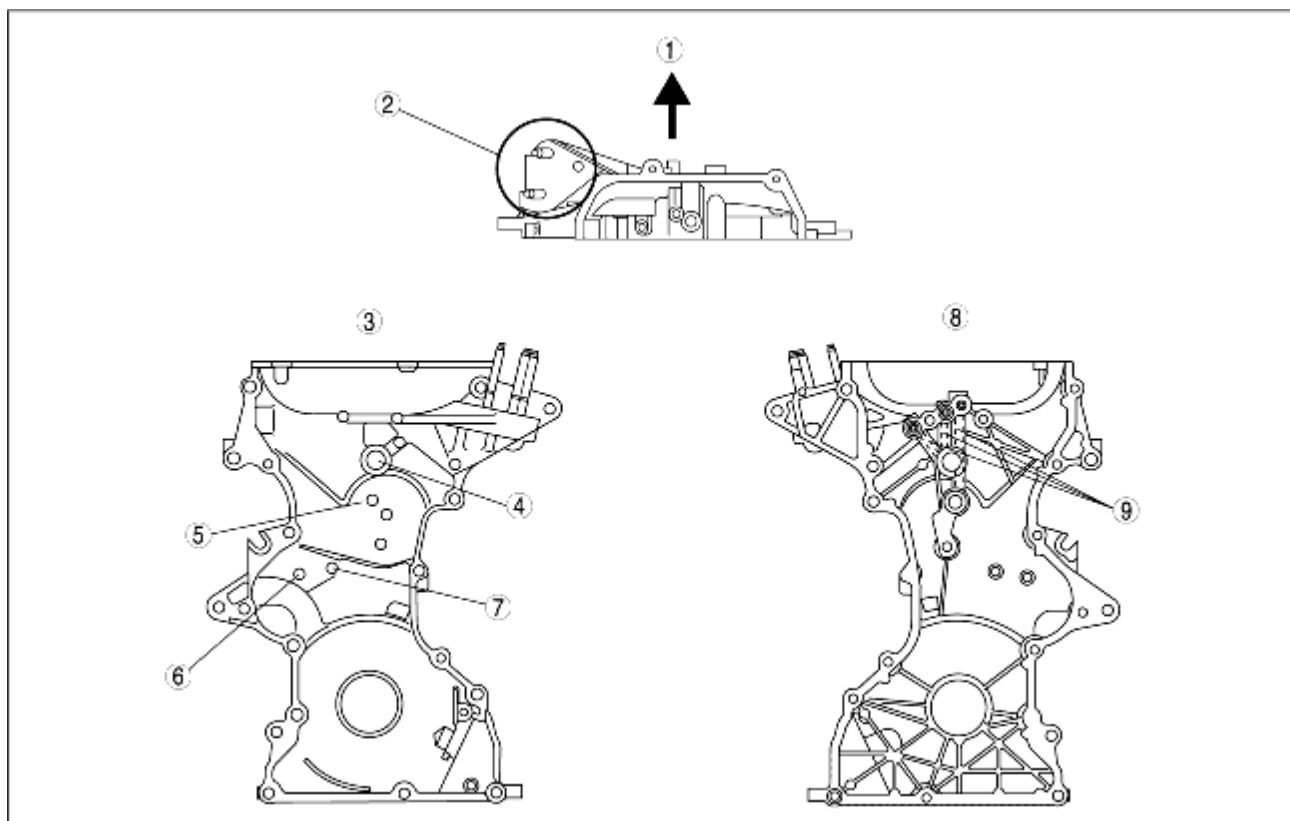


ENGINE FRONT COVER CONSTRUCTION [ZJ, Z6]

B3E011001001T01

- The engine front cover is made of aluminum alloy, and is integrated with the No.3 engine mount bracket to improve noise absorption and weight reduction.
- The service hole for unlocking the chain adjuster ratchet, and the service hole for securing the chain tensioner arm when loosening the timing chain tension are on the front cover for serviceability improvement.
- The installation hole for the oil control valve (OCV), the oil passage, and the oil filter are on the engine front cover. Oil filter maintenance is not necessary.
- A hole for installing the oil control valve (OCV) is provided.



B3E01 10T002

1	Engine front side
2	No.3 engine mount bracket
3	Front view
4	OCV installation hole
5	Oil filter
6	Service hole for chain tensioner lock release
7	Service hole for tensioner arm fixation
8	Back view
9	Oil passage to variable valve timing actuator